



Roof Number One™

# Struga Gutter system

edition  
29.03.2023



## Material

### Steel — solid basis for products

Scandinavian steel made by SSAB: hot-dip galvanized steel core painted with undercoat on both sides and coated with a 35 µm layer of GreenCoat RWS Pro or Pro BT.

Struga rain gutter system is available in three sizes:

- 125/90 – Scandinavian type gutter, roof planes 75–150 m<sup>2</sup>
- 135/90 – deep gutter, roof planes 125–250 m<sup>2</sup>
- 150/100 – wide gutter, semi-industrial use roof planes 175–350 m<sup>2</sup>

The available range of roof plane areas involves using one or two edge downspouts.

**i** SSAB GreenCoat sheet with a Bio-based Technology (BT) coating where a substantial portion of the traditional petrochemicals is replaced by Swedish rapeseed oil. This makes for a healthier environment and reduces the release of harmful substances into the air. The GreenCoat steel is currently the market's greenest product for roofs, façades and rainwater systems.



## Which colour will you select for your roof?

Struga system is available in fifteen colors which enables selecting just the right colour to match the colour of roof plane or to create an outline between the roof and facade.

015 matt RAL 9005 *	<b>black matt</b>	830 / RAL 6020	<b>green</b>
015 / RAL 9005	<b>black</b>	758 / RAL 3009	<b>red</b>
036 matt RAL 7024 **	<b>charcoal matt</b>	781 / RAL 3005	<b>cherry</b>
036 / RAL 7024	<b>charcoal</b>	742 / RAL 8004	<b>brick</b>
087 / RAL 7011	<b>graphite</b>	044 / RAL 9007	<b>titanium-zinc</b>
434 matt RAL 8017 *	<b>brown matt</b>	045 / RAL 9006	<b>silver</b>
434 / RAL 8017	<b>brown</b>	001 / RAL 9010	<b>white</b>
387 / RAL 8019	<b>dark brown</b>		

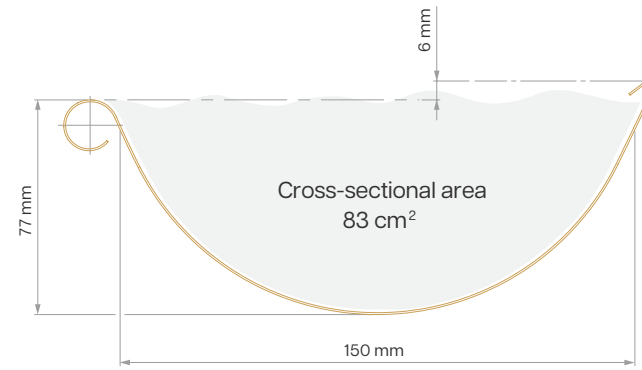
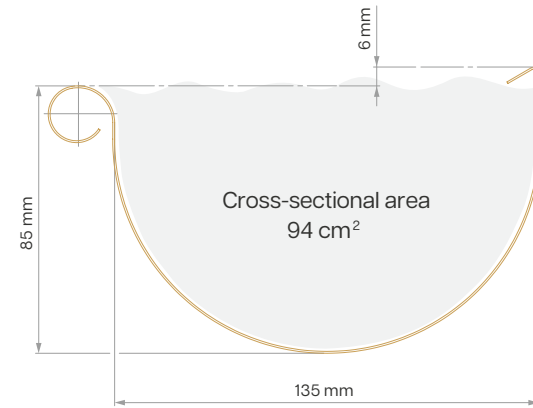
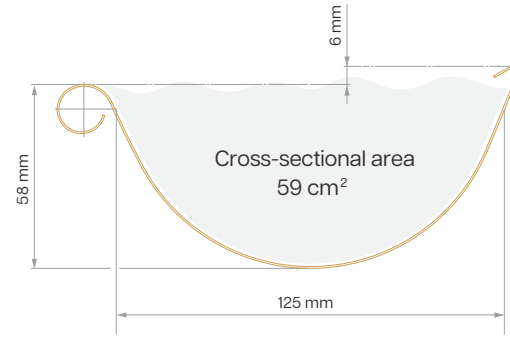
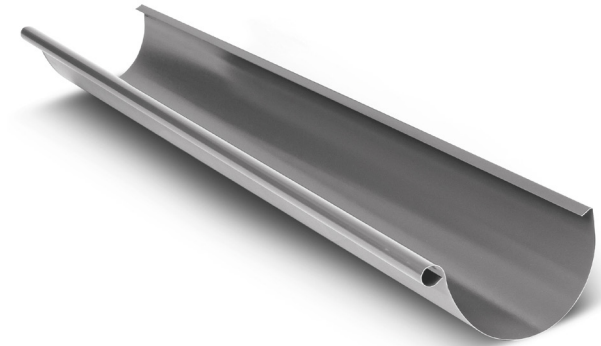
(\*) available for system 135

(\*\*) available for system 125 and 135



## / Rain gutter

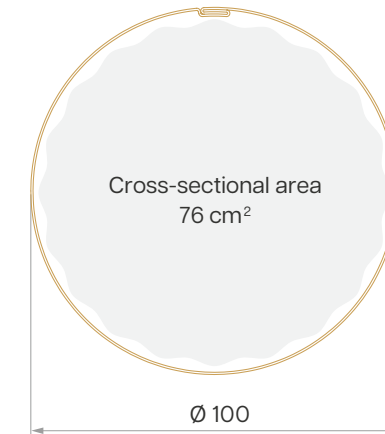
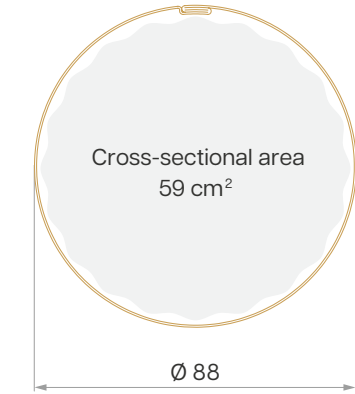
Rain gutter 135 looks great with high profile roofing thanks to the largest depth of 85 mm.



System	Size	Packaging		Rack		
<b>125</b>	2 lm	5 pcs.	10,5 kg	210 pcs.	42 pkg.	441 kg
	3 lm	5 pcs.	15,7 kg	210 pcs.	42 pkg.	661 kg
	4 lm	5 pcs.	21 kg	210 pcs.	42 pkg.	881 kg
<b>135</b>	2 lm	5 pcs.	12,8 kg	150 pcs.	30 pkg.	384 kg
	3 lm	5 pcs.	19,2 kg	150 pcs.	30 pkg.	575 kg
	4 lm	5 pcs.	25,6 kg	150 pcs.	30 pkg.	767 kg
<b>150</b>	2 lm	5 pcs.	12,8 kg	150 pcs.	30 pkg.	383 kg
	3 lm	5 pcs.	19,2 kg	150 pcs.	30 pkg.	575 kg
	4 lm	5 pcs.	25,5 kg	150 pcs.	30 pkg.	766 kg

## / Downspout

The closing joint of the downpipe is hidden inside, which means aesthetic finish and constant outside diameter. Each pipe has a standard coupling.



System	Size	Packaging		Rack	
<b>90</b>	1 lm	1 pcs.	1,3 kg	175 pcs.	221 kg
	3 lm	1 pcs.	3,8 kg	47 pcs.	177 kg
	4 lm	1 pcs.	5 kg	47 pcs.	236 kg
<b>100</b>	1 lm	1 pcs.	1,5 kg	100 pcs.	153 kg
	3 lm	1 pcs.	4,6 kg	35 pcs.	160 kg
	4 lm	1 pcs.	6,1 kg	35 pcs.	213 kg

## / Fascia hook

Material: mill painted sheet metal, 1.25 mm thick.



System	Packaging		Pallet		
150	60 pcs.	7,7 kg	3840 pcs.	64 pkg.	492 kg

## / Fascia hook interspaced

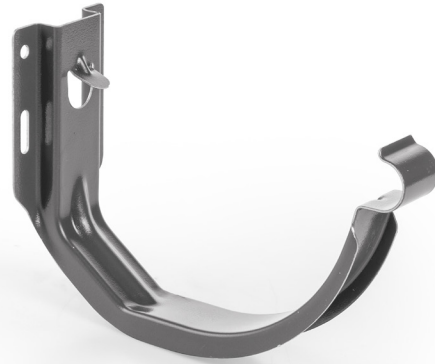
Material: galvanized flat bar 5 × 25 mm, powder coated.



System	Packaging		Pallet		
150	50 pcs.	16 kg	1800 pcs.	36 pkg.	576 kg

## / Fascia hook MAX

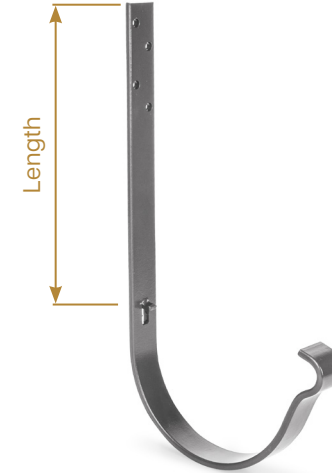
Made of mill painted sheet metal, 1.25 thick, easily withstands ice or snow load.



System	Packaging		Rack		
125	60 pcs.	7,7 kg	2160 pcs.	36 pkg.	276 kg
135	40 pcs.	6,9 kg	1440 pcs.	36 pkg.	249 kg

## / Rafter hook

Material: galvanized flat bar 5 × 25 mm, powder coated.



System	Length	Packaging		Pallet		
125	210 mm	50 pcs.	20,5 kg	1800 pcs.	36 pkg.	738 kg
	270 mm	50 pcs.	24 kg	1800 pcs.	36 pkg.	864 kg
	330 mm	50 pcs.	27 kg	1500 pcs.	30 pkg.	810 kg
135	210 mm	50 pcs.	23 kg	1800 pcs.	36 pkg.	828 kg
	270 mm	50 pcs.	26 kg	1500 pcs.	30 pkg.	780 kg
	330 mm	40 pcs.	23,2 kg	1200 pcs.	30 pkg.	696 kg
150	210 mm	50 pcs.	23 kg	1800 pcs.	36 pkg.	828 kg
	270 mm	50 pcs.	26 kg	1500 pcs.	30 pkg.	780 kg
	330 mm	50 pcs.	29 kg	1500 pcs.	30 pkg.	870 kg

## / Flat bar fascia hook

Slotted holes make installation easier and rounder corners protect the gutter against scratching.

Material: galvanized flat bar 4 × 25 mm, powder coated.



System	Packaging		Pallet		
125	50 pcs.	10,5 kg	3200 pcs.	64 pkg.	672 kg
150	50 pcs.	12 kg	3200 pcs.	64 pkg.	768 kg

## / Gutter support



System	Packaging	Pallet
universal	200 pcs. 6,6 kg	12800 pcs. 64 pkg. 422 kg

## / Gutter stiffener

This element is recommended to be placed at each gutter joint. Each gutter corner includes 2 pieces as standard.



System	Packaging	Pallet
universal	250 pcs. 13 kg	10000 pcs. 40 pkg. 520 kg

## / Universal endcap



System	Packaging	Pallet
150	50 pcs. 4 kg	3200 pcs. 64 pkg. 256 kg

## / Gutter endcap set, left and right

The set contains two tape butyl seals to be applied inside the gutter once the endcap is mounted. They provide 100% tightness and prevent water from remaining on the cut edge of the gutter.



System	Packaging	Pallet
125	50 set 7,5 kg	3200 set 64 pkg. 480 kg
135	40 set 8,1 kg	2240 set 56 pkg. 455 kg

## / Corner 90°

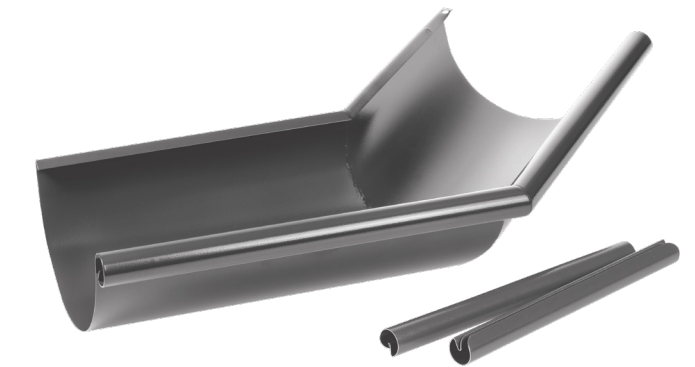
Each piece contains additionally 2 gutter stiffeners.



System	Packaging	Pallet
125	20 pcs. 13,4 kg	320 pcs. 16 pkg. 214 kg
135	10 pcs. 8 kg	160 pcs. 16 pkg. 129 kg
150	20 pcs. 15 kg	320 pcs. 16 pkg. 240 kg

## / Corner 80/100/110/120/135/150°

Permanent non-standard angle range provides continuous availability of corners in our warehouse. Welded, galvanized and powder-coated component. Each piece contains additionally 2 gutter stiffeners.



System	Corner	Packaging	Pallet
125	80/100/110°	5 pcs. 5 kg	180 pcs. 36 pkg. 180 kg
	120/135/150°	5 pcs. 5 kg	100 pcs. 20 pkg. 100 kg
135	80/100/110°	5 pcs. 5 kg	100 pcs. 20 pkg. 100 kg
	120/135/150°	5 pcs. 5 kg	80 pcs. 16 pkg. 80 kg
150	80/100/110°	5 pcs. 5 kg	180 pcs. 36 pkg. 180 kg
	120/135/150°	5 pcs. 5 kg	100 pcs. 20 pkg. 100 kg

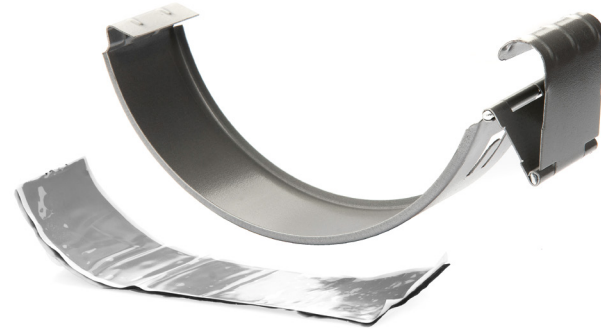
## / Gutter joiner with a butyl tape

A completely new component design consists of a butyl tape for gutter joints and a joiner, which can be opened and closed many times. Provides 100% tightness.



System	Packaging		Pallet		
125	50 pcs.	8,5 kg	1000 pcs.	20 pkg.	170 kg
135	50 pcs.	10,5 kg	1000 pcs.	20 pkg.	210 kg

## / Gutter joiner



System	Packaging		Pallet		
150	50 pcs.	9,4 kg	3200 pcs.	64 pkg.	598 kg

## / Gutter outlet



System	Packaging		Pallet		
125/90	50 pcs.	15,5 kg	800 pcs.	16 pkg.	248 kg
125/100	12 pcs.	3,6 kg	192 pcs.	16 pkg.	58 kg
135/90	30 pcs.	11 kg	480 pcs.	16 pkg.	176 kg
135/100	12 pcs.	4,2 kg	192 pcs.	16 pkg.	67 kg
150/90	12 pcs.	4,7 kg	192 pcs.	16 pkg.	75 kg
150/100	16 pcs.	6,7 kg	320 pcs.	20 pkg.	135 kg

## / Downpipe elbow

Side seams in the system 90 provide aesthetic finish.



System	Packaging		Pallet		
90	24 pcs.	7,9 kg	384 pcs.	16 pkg.	127 kg
100	20 pcs.	7,3 kg	320 pcs.	16 pkg.	117 kg

## Pipe bracket



System	Packaging		Pallet		
100	100 pcs.	11,9 kg	3600 pcs.	36 pkg.	428 kg

## Pipe bracket for bolt use



System	Packaging		Pallet		
100	100 pcs.	11,4 kg	6400 pcs.	64 pkg.	730 kg

Available bolt lengths:  
(bolts sold separately) 100 / 160 / 200 / 250 / 300 mm

## Universal pipe holder

Element for use on façades with and without insulation. The included cage nut allows a pin to be used. The second nut with a bolt acts as a clamp lock.



System	Packaging		Pallet		
90	100 pcs.	15,1 kg	5600 pcs.	56 pkg.	846 kg

Available bolt lengths:  
(bolts sold separately) 100 / 160 / 200 / 250 / 300 mm

## Downpipe branch



System	Packaging		Pallet		
90	8 pcs.	4,7 kg	160 pcs.	20 pkg.	94 kg
100	8 pcs.	6,3 kg	128 pcs.	16 pkg.	101 kg

✓ Rainwater catcher with a trap



System	Packaging		Pallet		
90	12 pcs.	9,4 kg	192 pcs.	16 pkg.	150 kg
100	10 pcs.	9,8 kg	160 pcs.	16 pkg.	157 kg

✓ Downpipe spout



System	Packaging		Pallet		
90	16 pcs.	5,5 kg	320 pcs.	20 pkg.	109 kg
100	16 pcs.	5,9 kg	256 pcs.	16 pkg.	95 kg

Weight: rack 26 kg; pallet 10 kg

Before purchase, please see product information available online.





Bratex Dachy Mrzyglód Spółka Komandytowa  
ul. Przemysłowa 22, PL 39-200 Dębica  
info@bratex.pl  
tel. +48 14 682 28 22

[www.bratex.pl](http://www.bratex.pl)

Helpline 801 081 018